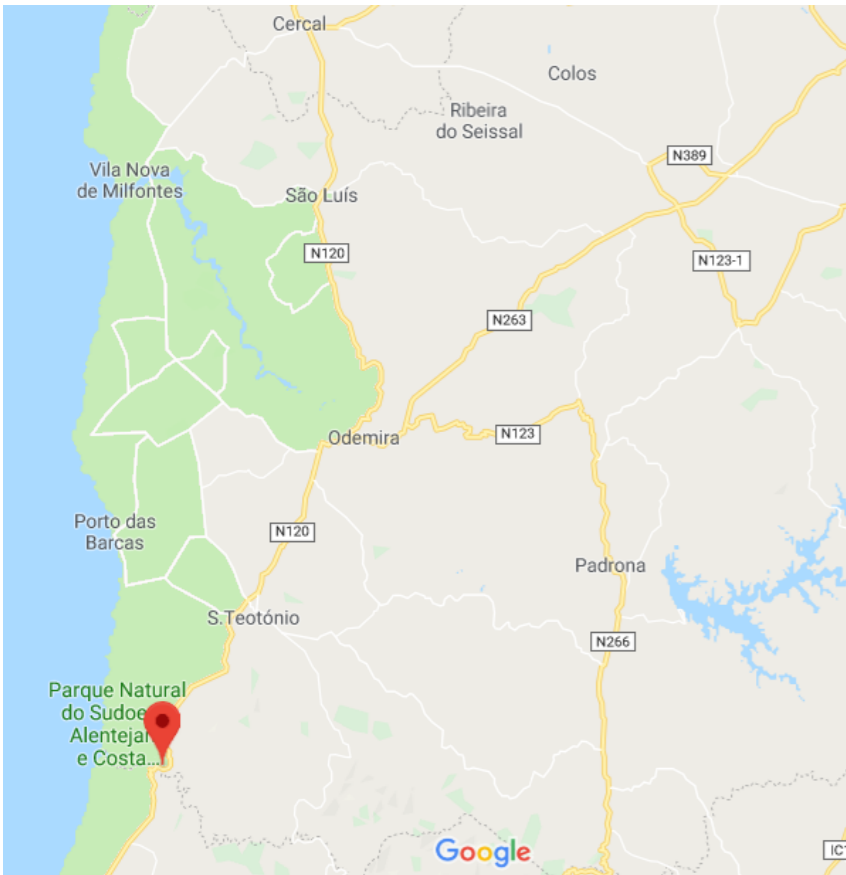


## Sitemap



## Habitat description

This route is inserted in a set of 3 observation routes to the Temporary Mediterranean Ponds in the municipality of Odemira. They are inserted in the Site of Community Importance of the Southwest Coast of Portugal, part of the Natura 2000 Network, the European Network of Natural Areas, and also in the Natural Park of the Southwest Alentejo and Costa Vicentina.

Mediterranean Temporary Ponds are temporary freshwater wetlands. They have water for a few months in the rainiest season and dry completely in summer. These wetlands are populated by a set of specialized plants and animals that dependent on the alternation between a time when the land is submerged or soaked in the rainiest months, and which dries up completely in the warmer months. When the ponds have water you can observe floating aquatic plants, such as the pond water crowfoot (*Ranunculus peltatus*) and amphibious plants that start to grow in water and bloom only when the soil is no longer submerged, one of the most emblematic being the lagoon-thistle (*Eryngium corniculatum*). There are also rare and protected plants such as a *Caropsis verticillato-inundata* or some endemic plants like *Hyacinthoides vicentina* (which has this name because it is original from the Costa Vicentina).

In addition to the very rich and diverse flora, a number of animals are associated with ponds, from a wide range of invertebrates to amphibians, reptiles, mammals and birds. Among these we can highlight the large branchiopoda crustaceans like the tadpole shrimp (*Triops vicentinus*) or some fairy-shrimp species.

## Habitat description

Several toads, frogs, tree frogs, salamanders and newts also inhabit ponds, either to breed or to feed. Many of these amphibians are dependent on these ponds at the beginning of their life cycle, in which they are exclusively aquatic, progressively developing their more terrestrial characteristics as the temporary ponds dry out between spring and summer. Among mammals, there is the presence of the Cabrera's vole, which is an endemic species of the Iberian Peninsula, threatened, and protected by European legislation. Among birds, it is common to observe in ponds: herons, white egrets, white storks, some species of ducks and grebes, or less frequently birds such as glossy ibis.

The habitat alternation also causes an alternation in the landscape throughout the year, which allows the observation of different scenes with the passing of seasons.

These routes contribute to a more sustainable tourism, with the demonstration of the added value of the conservation of priority habitats, the associated biodiversity and the Natura 2000 network - the European Network of Natural Areas.

Circular walking route

PR8 ODM - Charcos de S. Miguel

Visiting routes to the Mediterranean Temporary Ponds of the Southwest



Temporary Ponds:  
A natural habitat to be protected!

Project LIFE Charcos - Conservation of Temporary Ponds in the Southwest Coast of Portugal

[www.lifecharcos.lpn.pt](http://www.lifecharcos.lpn.pt)



## Route description

This small circular route, with 4.5 km in length, suggests the visitation to the temporary ponds located in the plateau of S. Miguel, in Paço Velho estate.

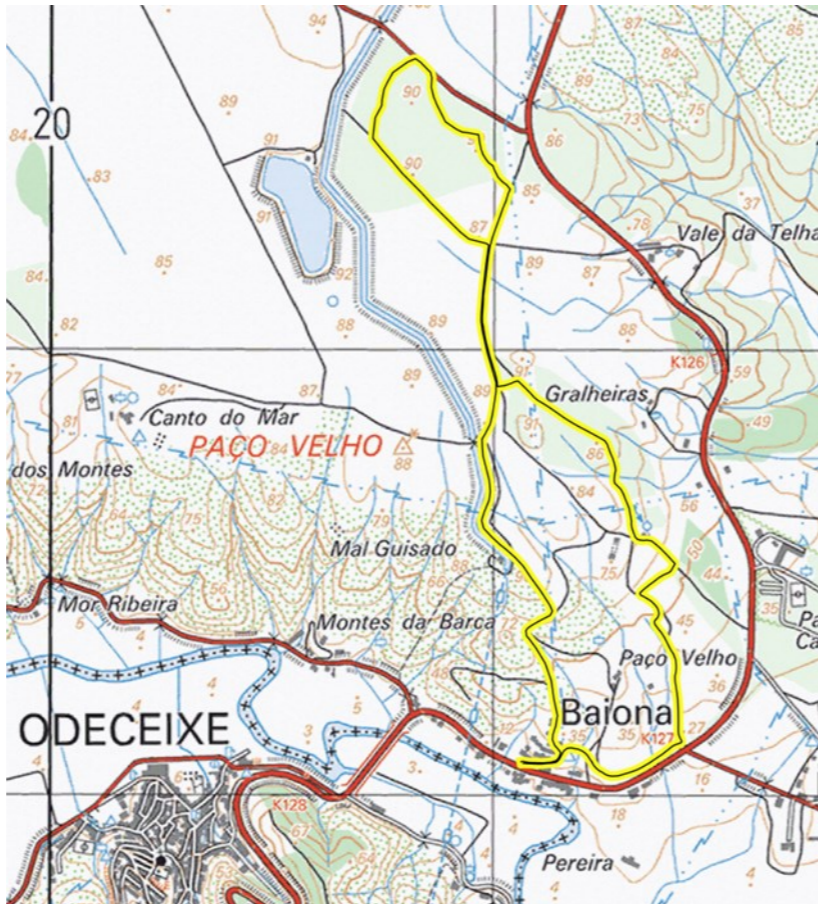
The beginning and end of the route is in Baiona village, between S. Miguel and Odeceixe, near the bridge over the Ribeira de Seixe that separates Alentejo from the Algarve. The ponds are located on a plateau, so it is necessary to start the uphill route, along 1 km.

Along the way there is no tourist support or inhabited houses. About 100 meters west of the starting point you will find Café Conchinha, and 100 meters east is the Origens grocery store. Within a radius of one kilometer from the starting point are the village of Odeceixe, the village of S. Miguel and the Camping site of S. Miguel. Odeceixe beach is 5 km away.

The Temporary Ponds are part of the landscape classified as a Site of Community Importance on the Southwest Coast, of the Natura 2000 Network (European Network of Natural Areas).



## Route map



## Datasheet

PR8 ODM - **Charcos de S. Miguel**

**Small route** - Thematic circular route starting and arriving at Baiona village.

**Extension:** 4,5 km.

**Municipality** of Odemira and **parish** of São Teotónio

**Access** by road EN120, in the village of Baiona, close to the bridge over Ribeira de Seixe, between S. Miguel and Odeceixe. **Coordenadas** do ponto de partida: Lat: 37.434206° Long: -8.761763°,

**Accumulated slope** of 80 meters.

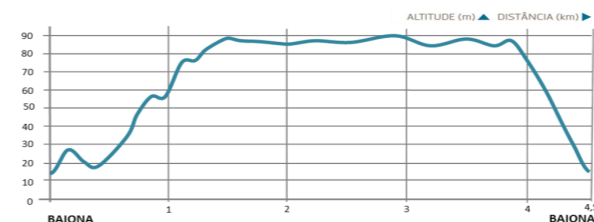
**Maximum altitude:** 90 m. **Minimum altitude:** 15 m.

**Approximate duration:** 2 hours

**Degree of difficulty:** Average (beginning of the route with accentuated unevenness).

**Recommended season:** all year round, preferably spring.

## Route profile



## Rules and recommendations

- Route to be made exclusively on foot.
- Circulate only on the signposted trails.
- The signage is intuitive to make the entire route autonomously in both directions..
- The circulation of motor vehicles puts walkers at risk. The circulation of vehicles in the dunes is prohibited.
- The biodiversity associated with Temporary Ponds is composed of endemic species, some uncommon, others rare. Do not collect or disturb animals or plants. Respect Nature.
- Be cautious with cattle. Although gentle, they don't like strangers approaching their calves.
- Respect private property; open and close gates and fences you find closed.
- Do not camp or start a fire outside the designated areas.
- Do not leave trash and help us collect what you find. There is no garbage collection point along the route.
- Route without toilet - take a bag and leave the track clean.
- Keep your dog on the leash and collect its waste.
- Be friendly with the locals.
- There aren't any support services along the route. Bring water and food supplies with you.

## Route marking

The route is signposted in both directions with the marks of Small Routes, in yellow and red.



Right track



Wrong track



Turn left



Turn right